

Personal Semantic Indexation of Images using Textual Annotations

Gregory SMITS, Michel PLU, Pascal BELLEC
R&D Division France Telecom, France

07 / 12 / 2006



research & development



Summary

- 1 ■ Motivation of this work
 - On-line services for personal photos management
 - Semi automated image annotation
- 2 ■ Semantic interpretation of personal annotations
 - Geographical Places and Person names ambiguities management
 - Paraphrases management
 - Paraphrases personal resolution
- 3 ■ Personalization of proposed descriptors
- 4 ■ Evaluation
- 5 ■ Conclusion

Motivations

- The digital revolution of personal pictures
 - Digital cams, mobile telephones web cams ...
- Image is a new way of communication and a subject of communications
 - **MMS, Blogs, On-line albums** ...

- **A need to share**

"The average inflow of pictures is: **38.400 photos/hour**. That is around 10 photos/second, 920.000 photos/day. "

source : <http://blog.forret.com/2006/10/a-picture-a-day-flickr-storage-growth/>

Album photo de voyage

Aide · Aller au menu · Rechercher

Argentine » Les Andes » Mère et fille

[PHOTO 15/16]

AFFICHAGE : 74%



Une mère et sa fille dans un village proche des grandes salines



- Argentine
 - Buenos Aires
 - Iguazu
 - La Patagonie
 - Les Andes
 - Terre de Feu

- Indonésie
 - Bali
 - Bornéo
 - Java
 - Ujong Kulon
 - Volcan Bromo
 - Volcan Kawa Ijen
 - Yogyakarta
 - Lombok
 - Volcan Rinjani
 - Sulawesi
 - Bunaken
 - Iles Togian
 - Macassar
 - Palu
 - Pays Toraja

- Maroc
- Singapour

Index des photos



Rocco, my brother Peter's girlfriend ...
600 x 493 pixels - 199 ko - jpg
blog.myspace.com



... my brother Peter's girlfriend ...
566 x 600 pixels - 239 ko - jpg
blog.myspace.com



... my brother Mike and his girlfriend,
189 x 170 pixels - 7 ko - jpg
brendoman.com



from my brother and his girlfriend ...
320 x 240 pixels - 60 ko - jpg
www.cs.northwestern.edu



... a lot like my girlfriend's brother-
201 x 265 pixels - 21 ko - jpeg
pclbaseball.com.ismmedia.com



My Way of Life
200 x 315 pixels - 66 ko - gif
www.georgeblowfish.com



... My boyfriend's lil brother and ...
448 x 336 pixels - 26 ko - jpg
suicidegirls.com



My brother and his girlfriend Donna
400 x 300 pixels - 42 ko - jpg
lefamily.joueb.com



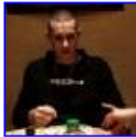
My brother and his girlfriend Donna
2048 x 1536 pixels - 704 ko - jpg
iceman75.free.fr



... my brother and his adorable ...
704 x 528 pixels - 152 ko - jpg
blog.myspace.com



... My brother by default, Kevin ...
288 x 384 pixels - 29 ko - jpg
blog.myspace.com



ME, my girlfriend,
73 x 73 pixels - 4 ko - jpg
www.bolt.com

Pikeo : On line service for pictures sharing

[english](#) | [français](#) | [español](#)

[sign in](#)



fearless diving ocean

pikeo BETA

share your world,
explore another.

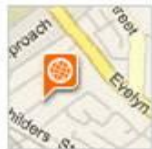
Store your photos online at
Pikeo and share them with
people the world over.

[show me photos of...](#)

who is it? **what** is it? **where** is it?

1GB storage for free! Store, organise and share your favourite photos online. [sign up!](#)

where in the world



Keep track of your travels by pinning your photos to an online map.

inside pikeo



Find out how easy it is to store, organise and share your photos.

[Take a peek >](#)

go mobile with pikeo




No matter where you are you can send photos from your camera phone to pikeo.

[about pikeo](#) | [terms of use](#) | [privacy policy](#) | [pikeo blog](#) | [help](#)


Pictures comments and tagging


pikeo BETA signed in as **celine** [sign out](#)

[> home](#) | [> my pictures](#) | [> my profile](#) | [> upload](#) | [Search](#)

 **celine**
San Francisco, United States

pictures [> slideshow](#)



29 / 769 

comments [+](#) [-](#) [□](#)

Add your new comment here:

[save](#) [Cancel](#)


tags [-](#) [□](#)

[blue](#) [San Francisco](#)

 [Add tag](#)

Angel Island019.JPG [> edit](#) [?](#)

Taken on October 22, 2006 at 2:38 pm Viewed 7 times



[about us](#) [terms of use](#) [privacy policy](#) [blog](#) [help](#) [want to help? report a bug](#)



hugo

[> link to this page](#)

hugo's albums(1)

sort **By Date (old to new)**



hugo's tags

who / what / where
paysage sunset mobile sardaigne animal
sarah emilie Maroc corse

hugo's contacts (6)



[celine](#)



[luca](#)



[lynx](#)



[obelix155](#)



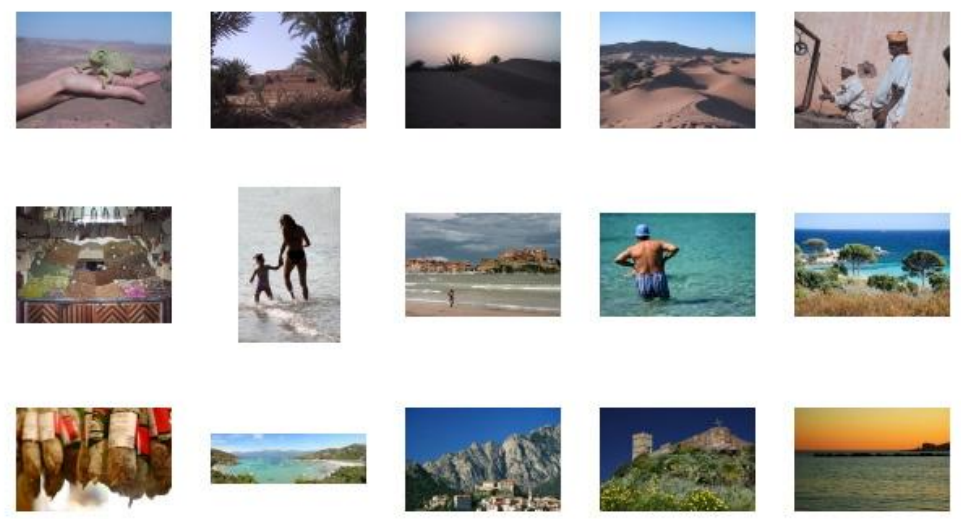
[phil_w](#)



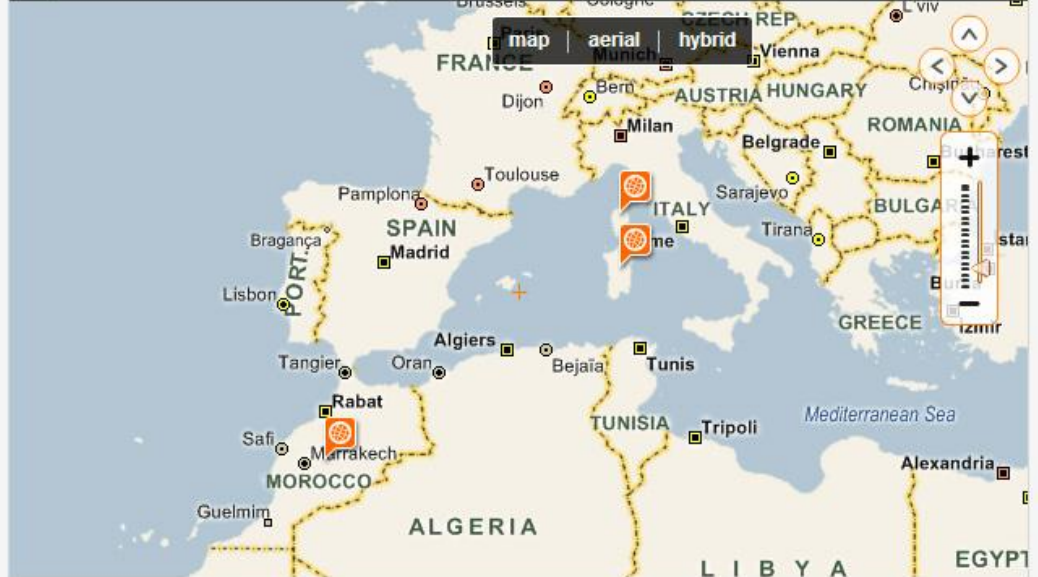
[vince](#)

hugo's pictures(18)

[> view all](#) [> slideshow](#)



map



[Albums](#) | [Personnes](#) | [Lieux](#) ?

- [ma famille](#) (11)
 - [papa](#) (3)
 - [maman](#) (5)
 - [Sylvain](#) (2)
 - [Nicolas](#) (0)
- [mes amis](#) (2)
 - [Olivier](#) (0)
 - [Fabrice](#) (0)
 - [mon voisin](#) (0)
 - [Delphine](#) (0)
 - [Stéphane](#) (2)
- [mes collègues](#) (6)
 - [Olivier](#) (2)
 - [Saïd](#) (4)
- [moi](#) (3)

11 photos sur : [Personnes](#) > [ma famille](#)

Affiner votre requête :
par Albums : [trié](#) à [trier](#)
par Personnes : [Sylvain](#) [maman](#) [papa](#)

◀◀ [Arreter le diaporama](#) ▶▶



une photo récente de mon frère à Florence
May 4, 2005 5:01:21 PM

Albums : [à trier](#) Personnes : [ma famille](#)
[Modifier / Supprimer](#)

Propositions du moteur d'indexation : 21
Lieux : → Florence Score=0.86 Personnes : → Sylvain Score=1
 → Nicolas Score=1

la personne sélectionnée

Pour créer un nouvelle personne, saisissez son nom (Vous pouvez sélectionner une personne)

Corpus analysis

- 30 URLs of personal albums
- 637 pictures annotations

- Average 8 words
- 90% a single sentence
- 95% contain a proper name of a person or a place
 - "The italian capital by night"
 - "Sophia and Martina spleeping on the beach"
 - "My uncle Joe (1999)"
 - "Sam and me"

Some key issues

■ Places and People

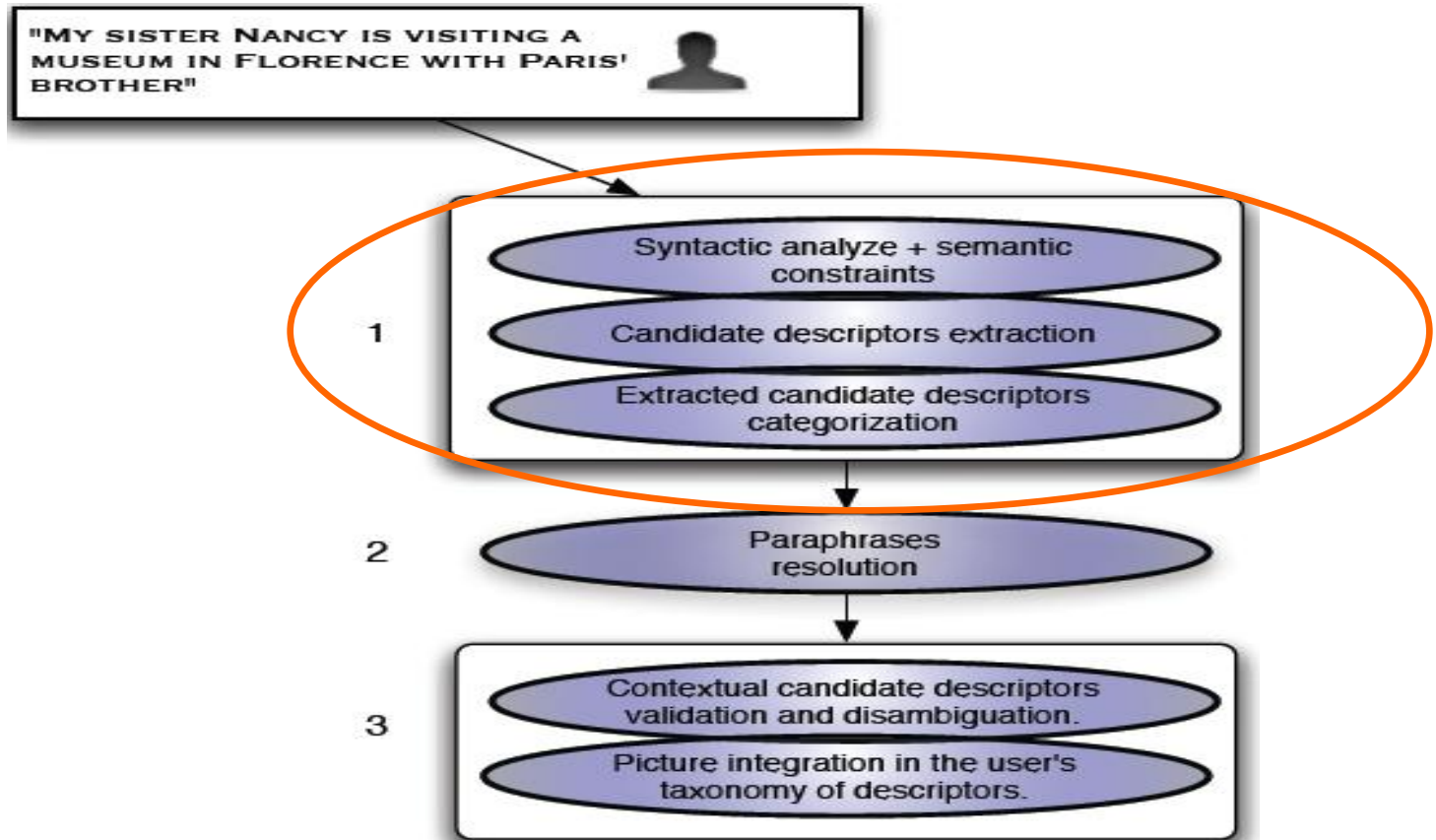
- 1708 entries in our French lexicon can be categorized as a place or person
 - Paris , Florence , Nancy ...
- And more Places are composed of first names (St Michel)

■ Use of paraphrases or references

- My sister, a friend ...
- A museum in Paris , a beach in Rio

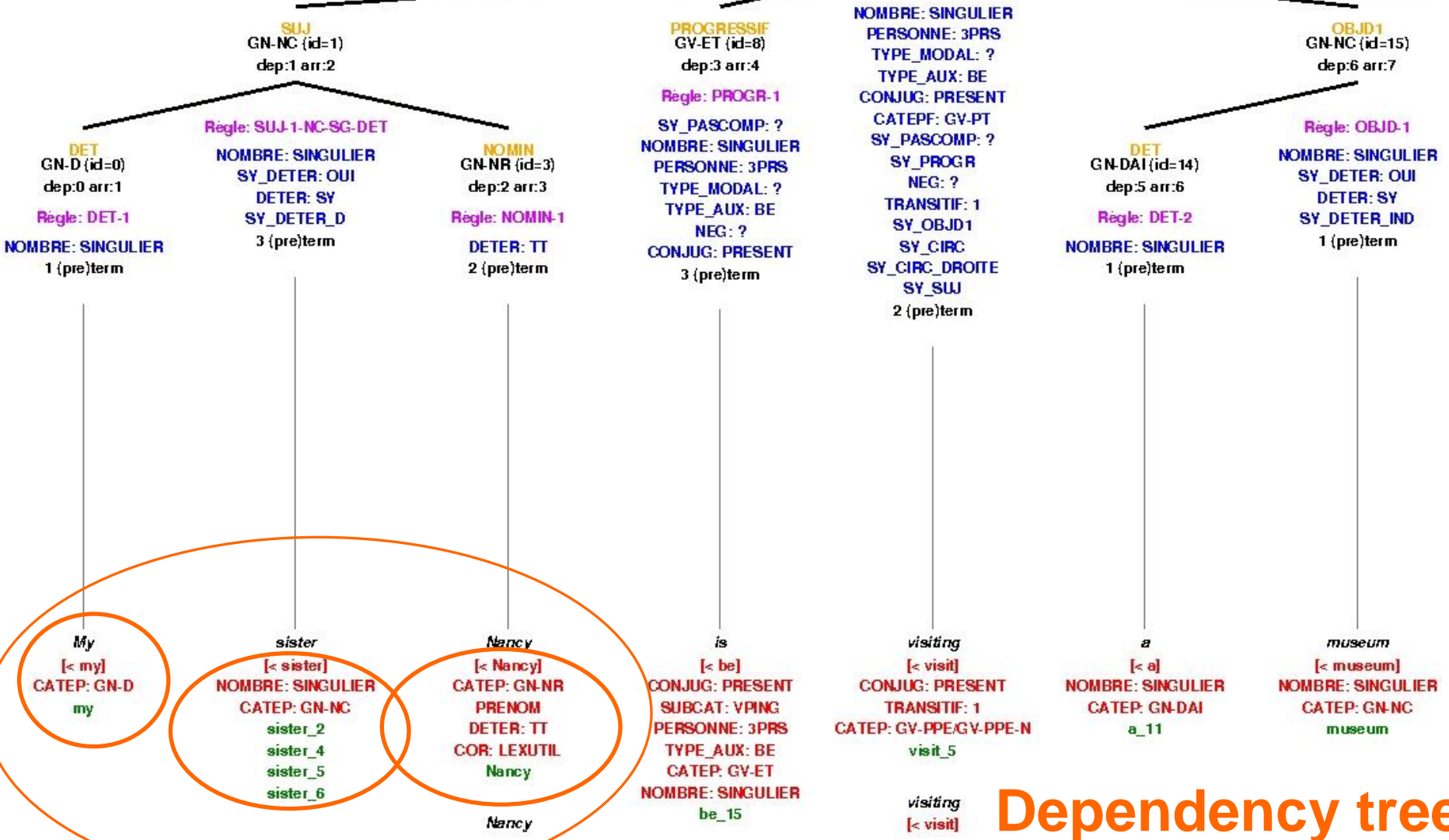
■ Organizing new descriptors in the user's own taxonomy

Semantic interpretation of personal annotations



Linguistic Analysis

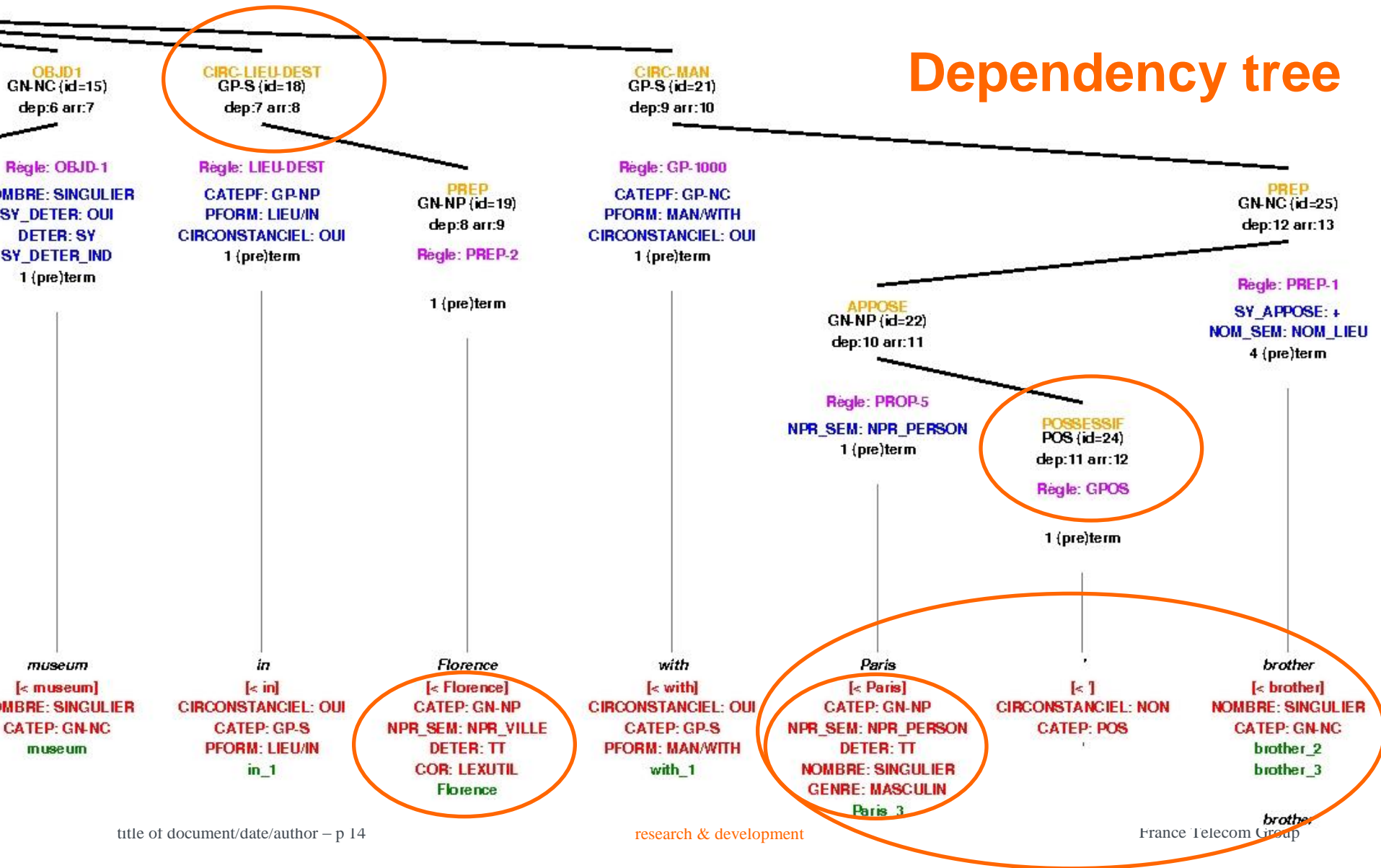
GV-PPE (id=11)
Solution Totale, dep:4 arr:5



Dependency tree

Linguistic Analysis

Dependency tree



Candidate descriptors extraction and categorization

■ Extraction

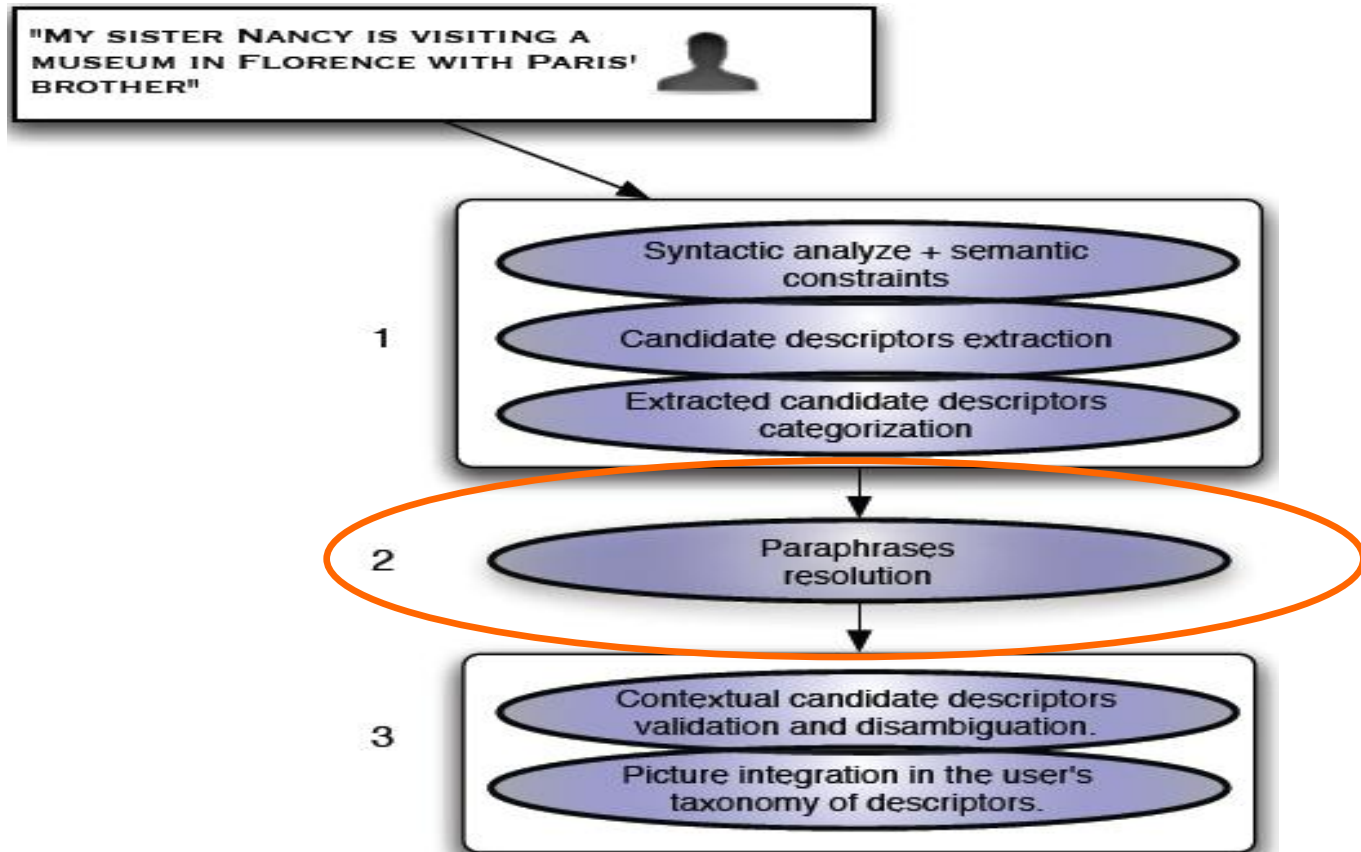
- Chunks of words
 - "My sister Nancy"
 - A museum in Florence => in Florence
 - "Paris's Brother"
- With proper nouns or relationships between people

■ Classification: Use of lexical and syntactic features computed according to semantic constraints

- *"Place"*
- *"Place paraphrase"*
- *"Person"*
- *"Person paraphrase"*
- *"Resolved person paraphrase"*

Ambiguities lead to a list of classified candidate descriptors and are resolved during a next step

Semantic interpretation of personal annotations



Semantic management of paraphrases

- Acquisition of semantic relations between people
 - From candidate descriptors categorized as "*resolved person paraphrase*"
"My sister Nancy"
 - Use of OWL ontology about relations between persons
:User23456 :sister :x789
:x789 :name :Nancy
 - Use of rules to deduce new relations
 - :x789 :brother :User23456

Semantic management of paraphrases

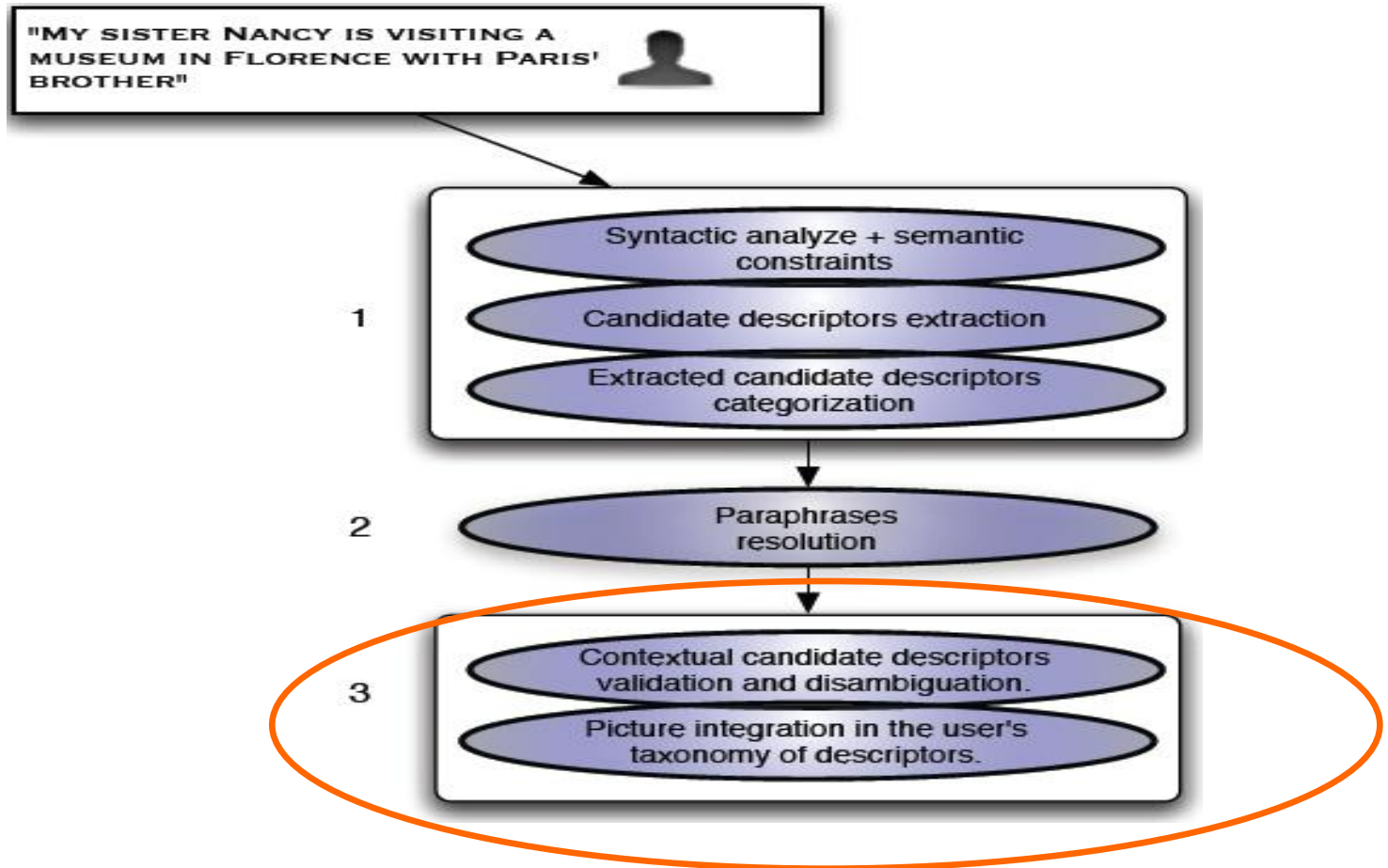
■ Resolution of paraphrase

- Persons : Use of persons ontology
"My sister on the beach" => "Nancy"
- Places : Use of the "Thesaurus of Geographical Names" (Getty Research Institute)

"a Museum in Florence" => "a bounded list of museum names"

- All possibilities lead to a list of candidate descriptors
- Initial paraphrase is kept associated to candidate descriptors for indexing and retrieval purposes
- All relations used are also associated to each resolved descriptor for later process

Semantic interpretation of personal annotations



Validation , ambiguity resolution using context

■ Contextual information

- Descriptors in the same category ascribed to pictures in the same album at the nearest date
- Indexation of the same picture by other users
- Already existing descriptors managed by the user

■ When ambiguities, candidate descriptors with a relation with contextual information are kept

- Ex: In "Picture of Florence" :
 - World/ Europe/Italy/Tuscany/Firenze province/Florence ?
 - Florence as a person ?

■ Unambiguous candidate descriptors with a relation with contextual information are automatically validated

Integration of new descriptors in the user's taxonomy

- Manual validation of the user of ambiguous candidate descriptors
- Creation and integration of new descriptors in the user's taxonomy

Use of semantic information associated to candidate descriptors

- Family/sister/Nancy =>
 - Sister is created as sub descriptor of Family
 - Nancy created as a sub-descriptor of sister
- World/ Europe/Italy/Tuscany/Firenze province/Florence
 - Europe , Italy, Tuscany, Firenze province Florence created , or linked to existing descriptors

First Evaluation

- Manual analysis of 269 annotations

- Proper names ambiguities cause many errors
- Robustness to incorrect sentences need to be improved

- Need to support more expressions patterns
 - Nancy, (my sister) , Nancy: my sister, my sister –Nancy - ...

Conclusions

- Semantic indexation
 - not just a bag of words
 - But named entities with relations
- Need to
 - Classify named entities : Places or People
 - Solve paraphrases or references
- Personalized interpretation using context
 - Indexation of previous images, user's taxonomies, user's relationships ontology...
- But NLP is difficult due to ambiguities and multiple forms of expressions